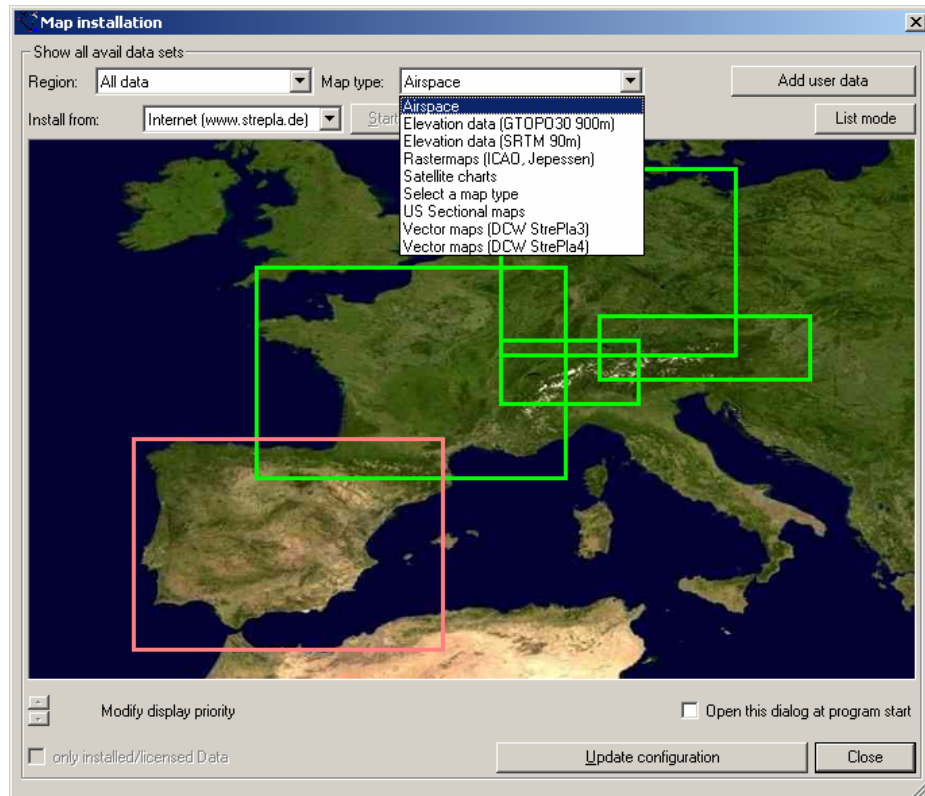


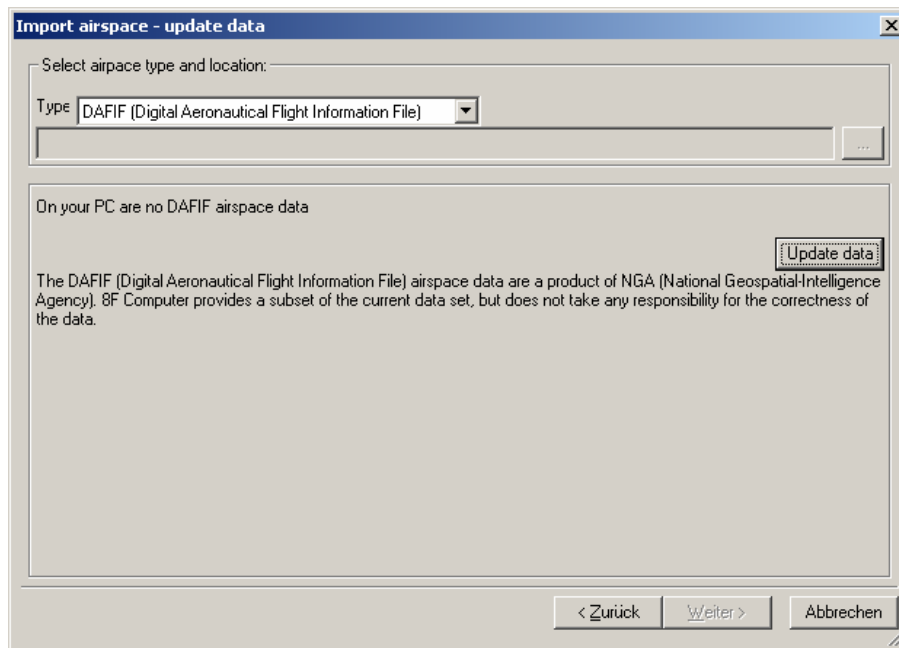
## Import airspace

Add your own airspace files to StrePla. StrePla supports the common formats Open Airspace and Tim Newport as well as the DAFIF (Digital Aeronautical Flight Information File) distributed by the NGA (National Geospatial Agency).

Open the map management with 'Extras, Map management' and select 'Airspace' in the map type drop down.

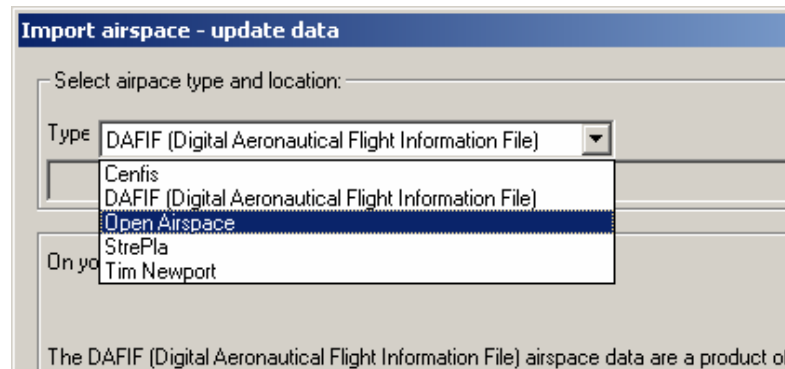


Start the airspace import wizard with a click on the button 'Add user data'.

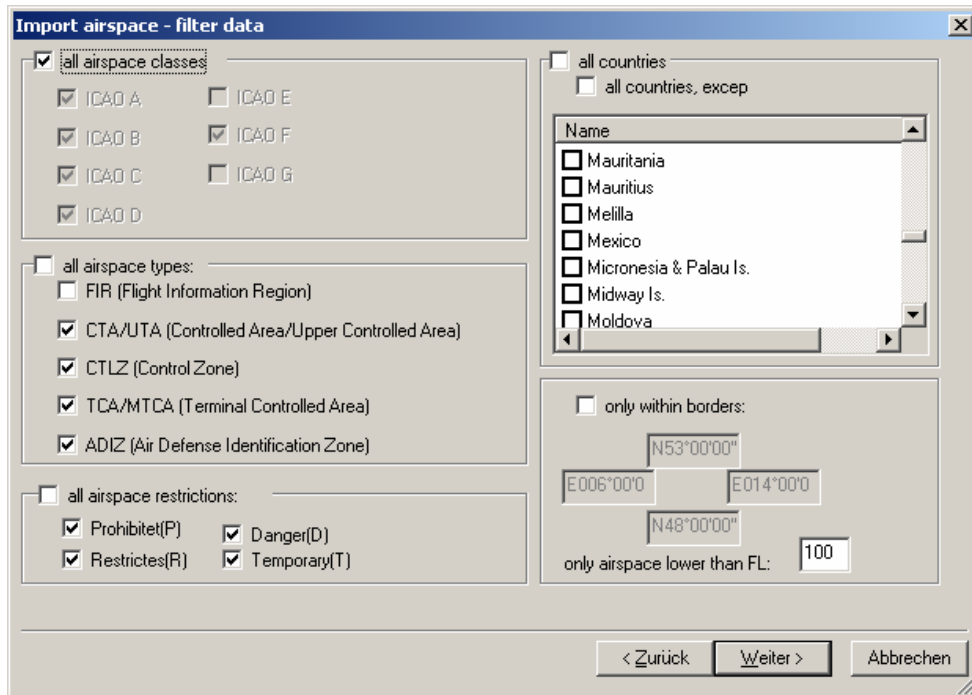


Select the type of airspace in the type dropdown.

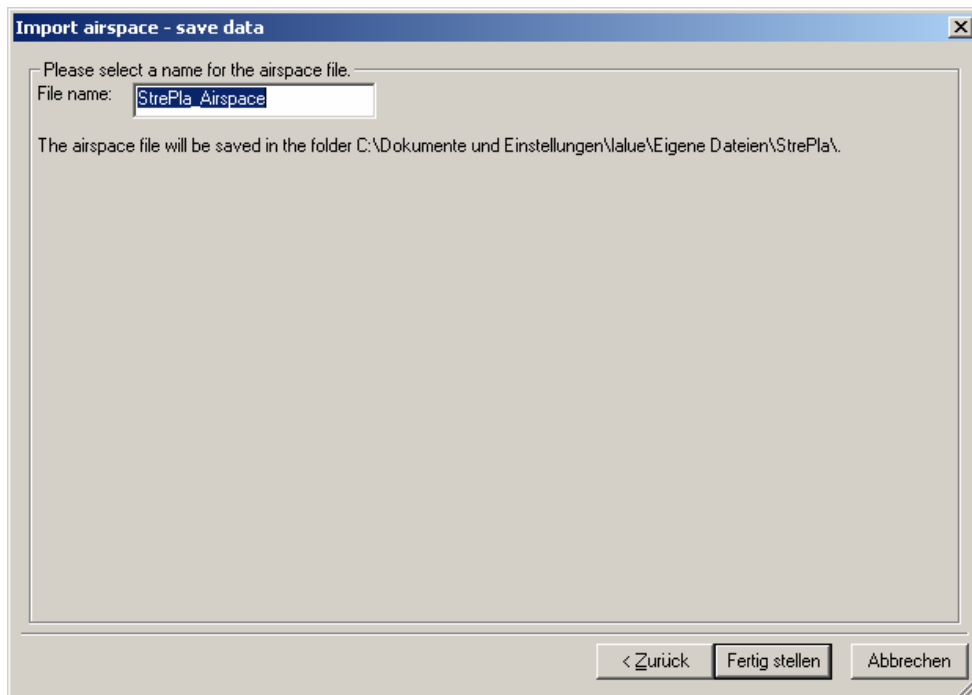
**DAFIF:** The DAFIF data are updated on a monthly base and provided on our web server. To get the most recent version, just click on the 'Update data' button.



**DAFIF:** The DAFIF data contains the complete world, so in this case you have reduce the data with the filter provided on the next page.



Make your selection and click on Next.



After specifying a file name the imported data will be converted into an internal StrePla format and saved in **<Personal Folder>\StrePla.**