



Version 2.00

English

Mai 2009

© Klaus Langelüddeke  
and  
8F Computer GmbH  
Jakob Lengfelder Strasse 46  
D- 61352 Bad Homburg  
Tel: +49 6172 / 94 28 48  
Fax: +49 6172 / 94 28 47  
<http://www.strepla.de>



## Contents

<b>1</b>	<b>Introduction .....</b>	<b>3</b>
<b>2</b>	<b>Hardware compatibility.....</b>	<b>4</b>
2.1	Logger and flight computer .....	4
2.2	PDA.....	4
<b>3</b>	<b>Installation .....</b>	<b>5</b>
3.1	Installation of pocket*StrePla - Connect .....	5
3.1.1	Download installation set .....	5
3.1.2	Start installation .....	5
3.2	Install from SD/MMC card after total discharge .....	8
<b>4</b>	<b>Operation .....</b>	<b>9</b>
4.1.1	Main screen .....	9
4.1.2	Download flight tracks.....	12
4.1.3	Declare a task.....	12
4.1.4	Create and edit routes .....	14
<b>5</b>	<b>Turn point file format .....</b>	<b>15</b>
5.1	File format of the pocket*StrePla file "airport.txt" .....	15
5.2	File format of the pocket*StrePla file "turnpoint.txt" .....	15



## 1 Introduction

**pocket\*StrePla - Connect** is a small utility, which enables you to directly download your flight tracks from your logger to your PDA and uploads of the daily flight declaration from your PDA to your logger.

You do not longer need to lug your laptop to the airport. Especially for fixed build in loggers such as LX 5000 FAI, LX 7000 FAI, Cambridge 302 it is very easy do download the data while cleaning the glider. But also user of portable loggers such as Volkslogger benefit from this solution, because there is no longer a need to dismount the logger after each flight. Download the data to your PDA, take them at home and transfer them to your PC, OLC ....

**pocket\*StrePla - Connect** is also a supplement for users of other moving map software ( WinPilot, SeeYou Mobile, pocket NAV, Glide Navigator, GPS-NAV) because not all of them have such functions at their disposal.

Please be aware, that you need a cable connection your PDA with the logger. For this there is more information on [www.strepla.de](http://www.strepla.de) and on the respective web page of the logger manufacturer.

**Pocket\*StrePla** user do not need **Pocket\*StrePla**, because it is part of the software suite.



## 2 Hardware compatibility

### 2.1 *Logger and flight computer*

**pocket\*StrePla - Connect** supports the following hardware:

- Cambridge family ( Series 302, Series 10, 20 and 25)
- Colibri
- FLARM
- LX 20
- LX 5000 FAI
- LX 7000
- Posigraph
- Volkslogger
- Zander/SDI 940/941

### 2.2 *PDA*

The hardware requirements are the same as for **pocket\*StrePla**.

- Processor: PocketPC with StrongArm 206 MHz oder XScale 400 MHz Processor.
- Operating system: PocketPC 2002, Mobile Windows 2003 or Windows Mobile 5



## 3 Installation

### 3.1 Installation of pocket\*StrePla - Connect

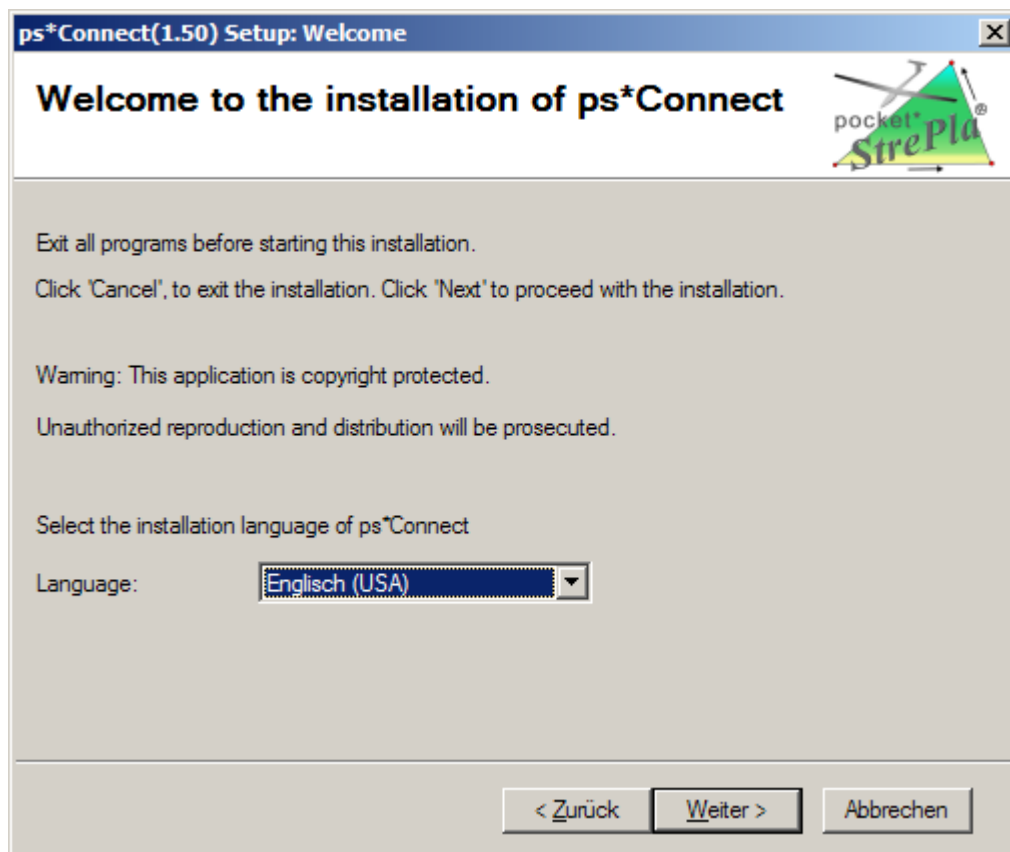
The installation takes place on your desktop or laptop. To do this you need to have ActivySyn installed on your PC and the connection must be established to your PDA (Round green symbol in the taskbar).

#### 3.1.1 Download installation set

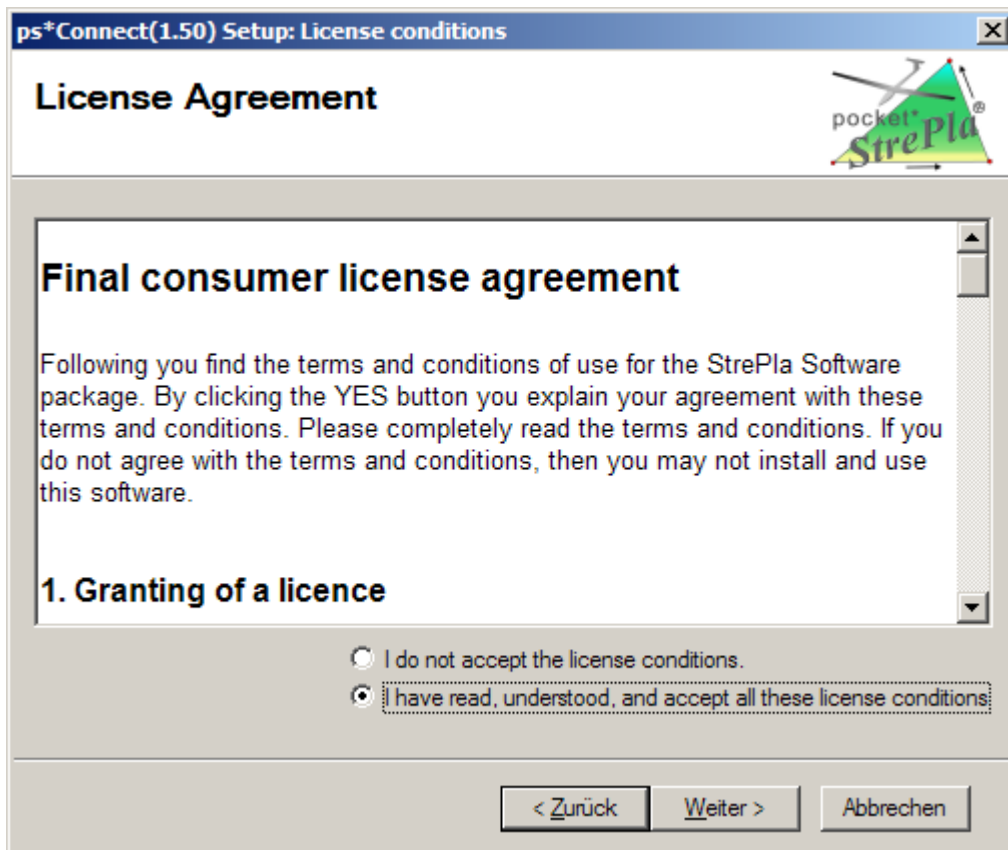
Download the installation set „**setup\_ps\_connect.exe**“ from our Server [www.strepla.de/download/bin/setup\\_ps\\_connect\\_2.00.exe](http://www.strepla.de/download/bin/setup_ps_connect_2.00.exe) Save it on your harddrive in a folder of your choice. We recommend "Desktop".

#### 3.1.2 Start installation

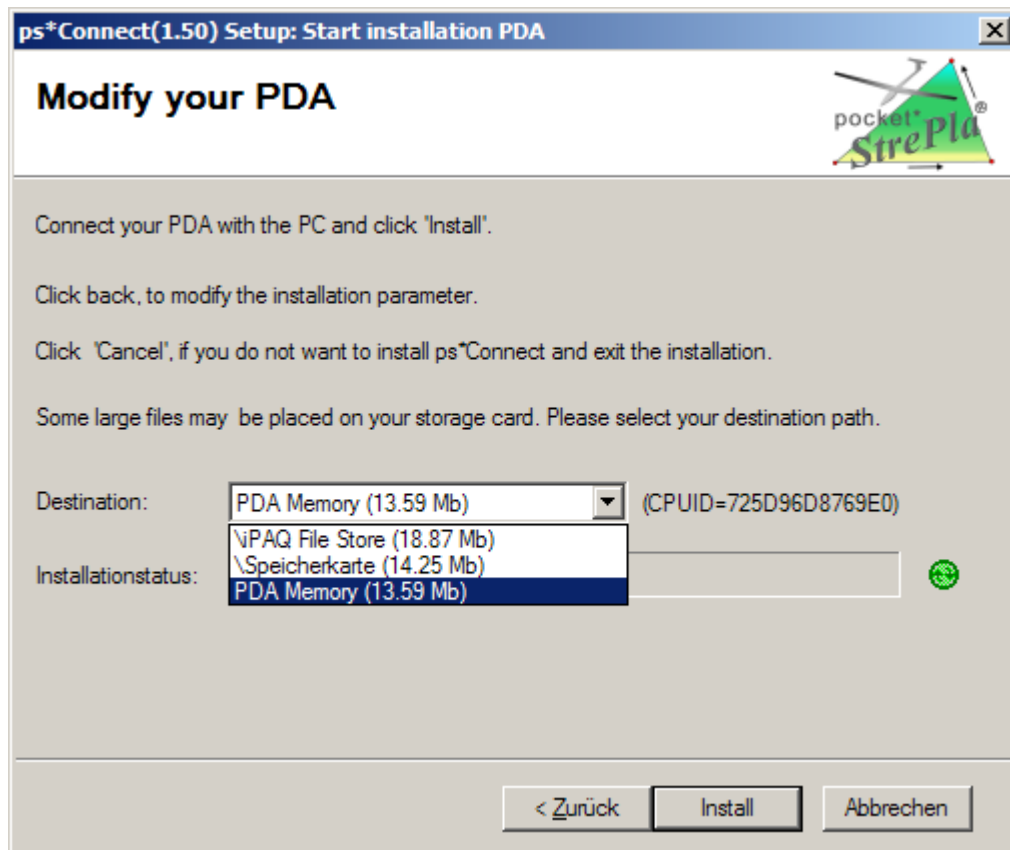
Start the installation with a double click on **setup\_ps\_connect\_2.00.exe**.



Click on 'Next'



Confirm the license agreement and click on 'Next'. Please be patient, the update of the next screen may need some seconds.



Select the installation destination on your PDA. **pocket\*StrePla - Connect** needs approx 1 MB storage. If the round symbol in the status row is gray, there is no connection to your PDA. Please connect your PDA, in case of problems read the ActiveSyn and PDA documentation.

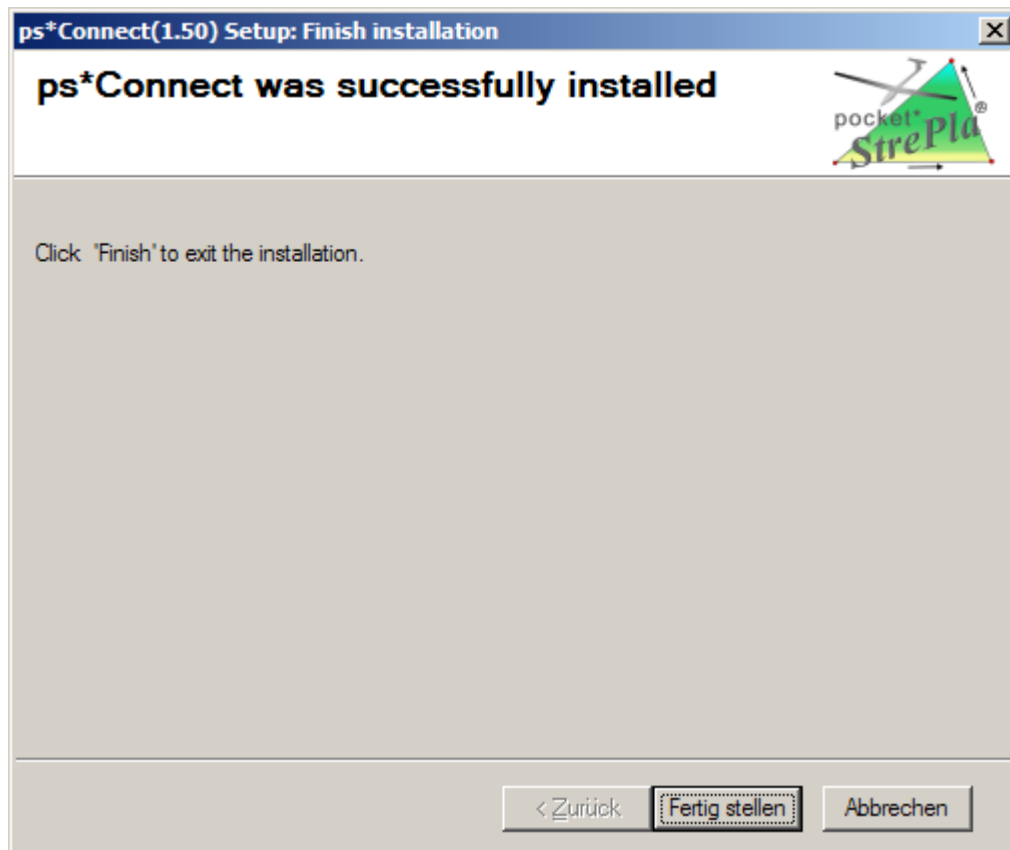
### 3.1.2.1 *Some thoughts about installation on a memory card (SD, MMC, CF, iPAQ File Store, etc.)*

Most PDAs are relative energy hungry, which leads to empty batteries after about 1 week, if you forget to put it in a recharging device. All data including **pocket\*StrePla - Connect** are lost!

To circumvent this problem install **pocket\*StrePla - Connect** on a memory card. All data stored on such a card will not be lost!

To reactivate **pocket\*StrePla - Connect** after empty batteries, read section "Install from SD/MMC card after total discharge".

Click on Install.



The next and last screen will be shown after finishing of the installation. Click on finish to close the installation program.

### **3.2 Install from SD/MMC card after total discharge**

If you forget to plug your PDA in a charging device and the batteries are discharged all data are lost.

To re-establish **pocket\*StrePla - Connect** quickly you have to install in on a SD/MMC card. This will slow down the program start up and finish time a little, but will not have further negative effects.

After a total discharge (data loss) proceed the following steps ( they are given for an iPAQ, other PDA's are similar):

1. Open the file explorer with a click on Start, Programs, File Explorer
2. Select My device, Storage card, ps\_Prog
3. Click on pS\_conn

**pocket\*StrePla - Connect** is now again installed on your PDA and can be started from your start menu as used.

Please consider, that some other configuration steps are necessary after a total discharge. For instance you have to set the clock. Please remember to deactivate your infrared sensor in

- a.) Start, Configuration, Connections, Send
- b.) Deselect receive.



## 4 Operation

Before working with **pocket\**StrePla* - Connect** you have to perform some configuration steps. For this click on File, Options and proceed with section "Select logger".

### 4.1.1 Main screen



After starting the program the main dialog will be shown. The current communication status is shown for the selected logger.

The dialog consists of four detail pages (tabs):

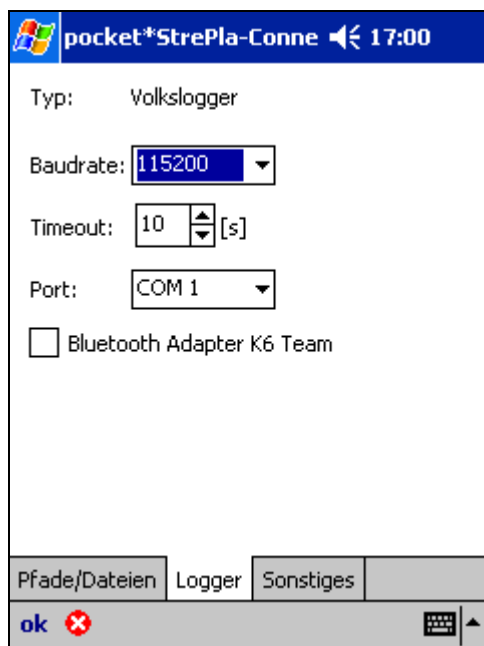
- Status,
- Flight track download
- Declaration upload and
- Waypoints

#### 4.1.1.1 Select a logger

- Select one of the **pocket\**StrePla* - Connect** supported logger from the dropdown list.



Connect your logger with the PDA and activate the PC Mode ( Volkslogger only). Under rare conditions adapt the parameter of the serial interface (always COM 1) under File, Options, Logger:



**Please attend:**

- In most cases there is no need to adapt the serial configuration. Only in case of LX navigation devices please ensure that both (logger and PDA) are set to the same baud rate (19200 Baud is factory default).

If you use the Bluetooth Adapters from K6 Team [www.k6-team.de](http://www.k6-team.de) select the check box at „Bluetooth Adapter K6 Team“ and select the right COM port (most the time COM6 or COM8).

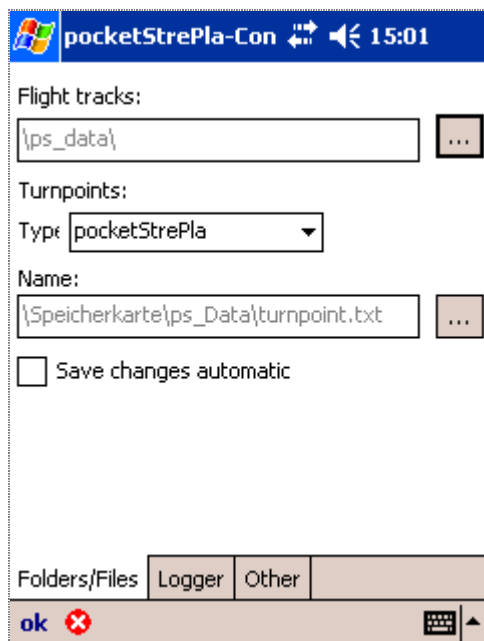


If the logger is connected, the serial id and the firmware sub release are shown.

#### 4.1.1.2 Configure folders and files

##### 4.1.1.2.1 Select the folder for the flight track files.

In to the tab Options: Folders/Files you can select the folder for he flight track files. Click in the "..." button and select a folder of your choice.

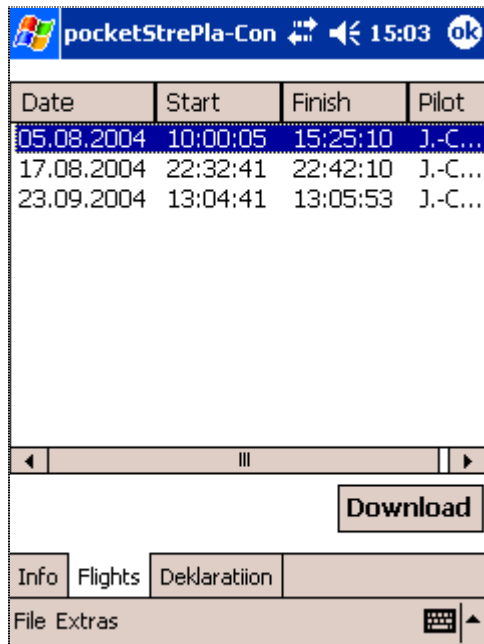


Close the dialog with a click on the "Ok" button in the lower left corner of the dialog.



### 4.1.2 Download flight tracks

Select the tab 'Flights'. If a logger is connected all flights stored on the logger are downloaded and displayed.

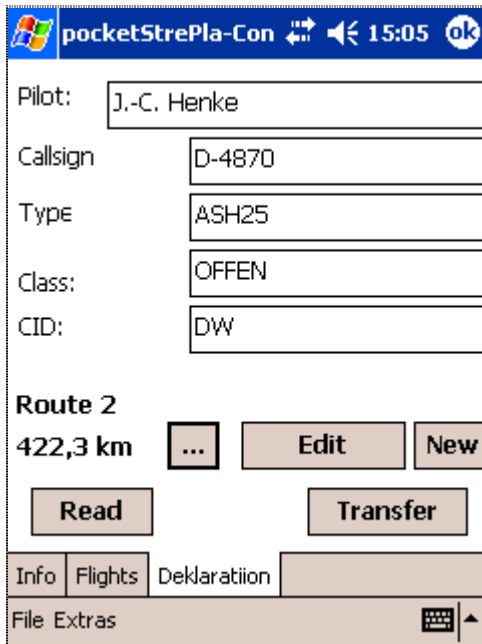


Mark all flight tracks you want to download and click on 'Download'. The flight tracks are stored on the folder which may be set in File, Options, Folders/Files (Standard= /ps\_Data).

**Please attend:** For the old Cambridge and LX Navigation logger only the binary versions are downloaded (CAI for Cambridge and FIL, LXN, SDI for LX navigation). Those files can be converted to IGC files due to technical reasons only on the PC. **StrePla3** does this in File, Import, Flight tracks automatically.

### 4.1.3 Declare a task

Select the tab 'Declaration'



Pilot: J.-C. Henke  
 Callsign: D-4870  
 Type: ASH25  
 Class: OFFEN  
 CID: DW

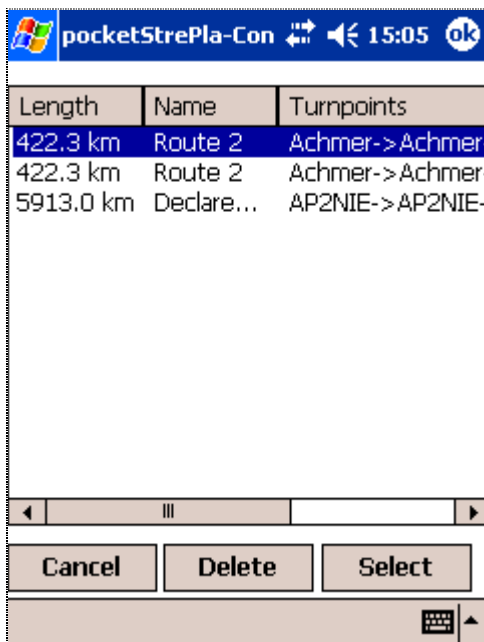
**Route 2**  
 422,3 km    ...    Edit    New

Read    Transfer

Info    Flights    Deklaration

File Extras

Please fill in your personal data and select a route (click in the select button '...'). If no route is in the turn point file, create your own route with a click in 'New'. Due to technical reasons not all file formats support routes (for instance the WinPilot DAT format).



Length	Name	Turnpoints
422.3 km	Route 2	Achmer->Achmer
422.3 km	Route 2	Achmer->Achmer
5913.0 km	Declare...	AP2NIE->AP2NIE-

Cancel    Delete    Select

Select your route and click on 'Select'.

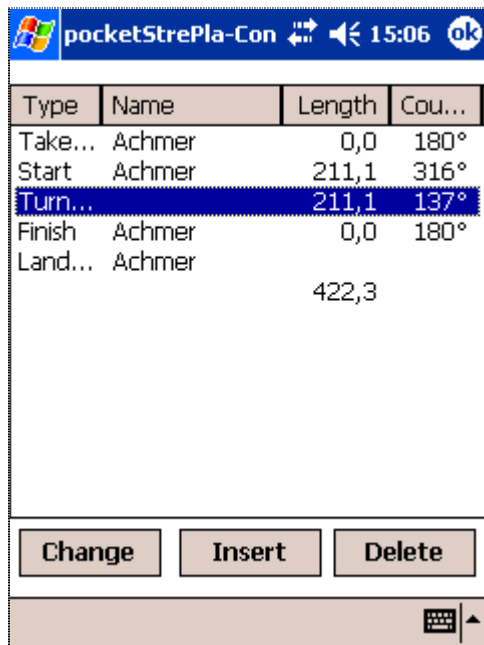
Upload your declaration to the logger with a click on 'Upload'.

**Please attend for Cambridge logger:** While uploading a new declaration, all flight tracks stored on the logger are deleted.



#### 4.1.4 Create and edit routes

Click on the button 'Edit' or 'New' in the tab 'Deklaration'. The edit route dialog opens. You can insert, change and delete turn points from the turn point file (See Options, Folders/Files). New turn points are inserted after the selected turn point.



After changing a route **pocket\*StrePla - Connect** asks you to save the changes in the turn point file while exiting the program.



## 5 Turn point file format

### 5.1 File format of the pocket\**StrePla* file "airport.txt"

#### Record Type 1

Example: 1;00001;Ailertchen;5035670N;00756750E;470;A;123.050;22/04

"1"	Record type ID – always "1".
"00001"	Id of the turn point, any integer between 1 and 99999
"5035670N"	Latitude of the turn point.
"00756750E"	Longitude of the turn point.
"470"	Elevation of the turn point in meter above sea level.
"A"	Type of turn point: "A"=Airport, "L"=Landable, "P"=Mountain pass, "T"=Turnpoint.
"123.050"	Frequenzy in Mhz, empty if not available.
"22/04"	Runway direction, empty if not available.

### 5.2 File format of the pocket\**StrePla* file "turnpoint.txt"

#### Record Type 1

Example: 1;00003;Anspach/Taunus;5017400N;00832200E;336;A;121.025;24/06

See above for details.

#### Record Type 2

Example: 2;00007;Route\_1;581.3;00003;00003;00012;00030;00013;00003;00003

"2"	Record type ID, always "2".
"00007"	ID of the route, any valid number between 1 and 99999. The route with ID="00000" is the last used route in pocket* <i>StrePla</i> .
"Route_1"	Name of the route.
"581.3"	Length of the route in km.
"00003"	ID of a record with Type ID = 1. Each route contains at take off, start, 0..n turn points, finish and landing point. pocket* <i>StrePla</i> does not use take off and landing.

#### Record Type 3

Example: 3;00007;1;0.0000;50.0000;1;320;190;F;F

"3"	Record type ID, always "3".
"00007"	Route ID to which record belongs.
"1"	Index of the route turn point: 0=start, 1=first turn points.
"0.0000"	Inner radius if an AAT sector in km.
"50.0000"	Outer radius if an AAT sector in km.
"1"	Turn point type: 0=Symetrical sector, 1=Zylinder, 2=AAT, 3=symetrische start/finish line, 4=free start/finish line, 5=Check point.
"320"	Start radial of an AAT sector in degree.
"190"	End radial of an AAT sector in degree.
"F"	Open sector, no outer radius (True/False)
"F"	Curved start line (True/False)